

**RF
NEXUS**

Product Datasheet

NEX14-EXT-KB1-001

Key Features

- 4G/5G
- NB-IoT/ Cat-M1
- 700/960 MHz
- 1415/1515 MHz
- 1700/2900 MHz
- 3400/3800 MHz
- Adhesive Mount
- Water Resistant
- Dimensions
75 × 20 x 7.7 mm



www.nexus-rf.com

1- Introduction

The NEX14-EXT-KB1-001 is a high-performance omnidirectional dipole antenna, specifically designed for adhesive mounting in Cellular network applications. Covering the widely used 4G/5G bands, this antenna ensures reliable connectivity, making it an excellent choice for applications that require consistent performance in these networks.

The NEX14-EXT-KB1-001 features a robust ABS-UV resistant enclosure, making it perfectly suited for outdoor environments where durability and weather resistance are crucial. Its design allows it to maintain an omnidirectional radiation pattern, providing continuous and stable signal reception and transmission across all directions, ensuring dependable performance in even the most challenging conditions.

In addition to its rugged construction, the adhesive mounting option makes installation quick and convenient, offering flexibility in placement. This makes the NEX14-EXT-KB1-001 ideal for various outdoor and industrial applications where space and secure mounting are important considerations, without compromising on signal quality or reliability.

2- Specifications

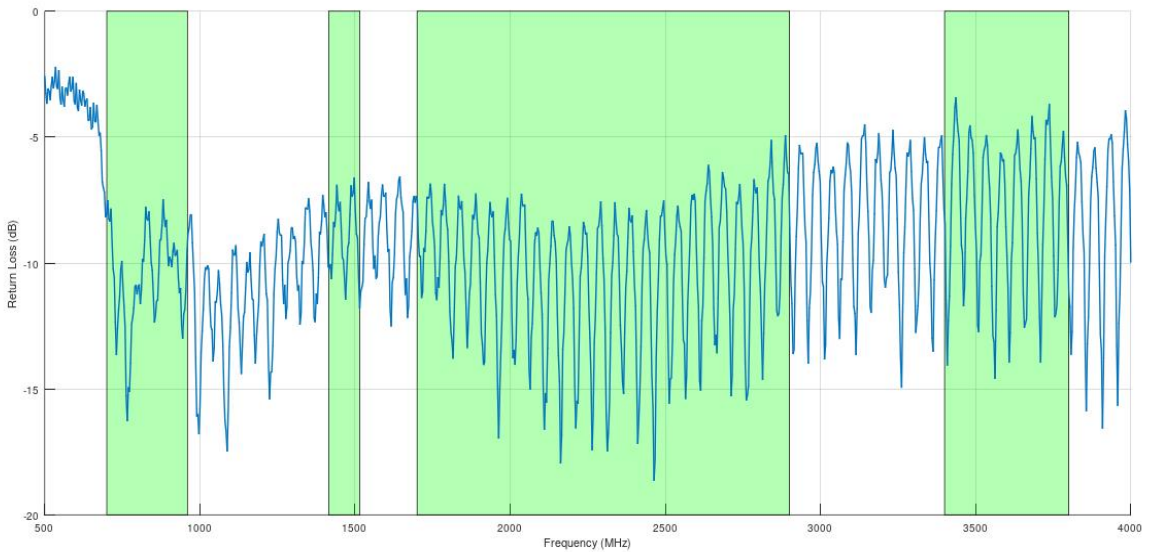
Mechanical	
Size	75x20mm
Thickness	7.7 mm
Connector	SMA(M)
Casing	ABS(UV)
Weight	8.5g
Temperature Range	-40°C to 85°C

Electrical				
Frequency (MHz)	700/960	1415/1515	1700/2900	3400/3800
Return Loss (dB)	-8	-8	-6	-5
VSWR	2.5:1	2.5:1	3:1	3.5:1
Efficiency	40%	40%	30%	20%
Peak Gain (dBi)	-0.5	0	-1	-1.5
Impedance	50Ω			
Polarization	Linear			
Pattern	Omnidirectional			

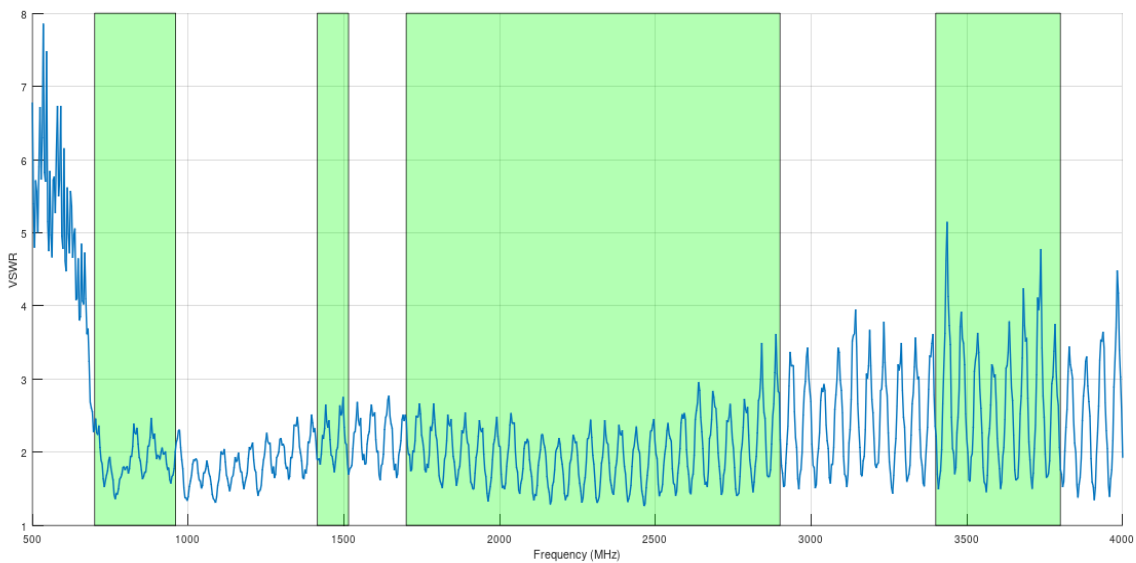
*Data are given for 2m LMR100 cable.

3- Antenna Parameters

3.1- Return Loss

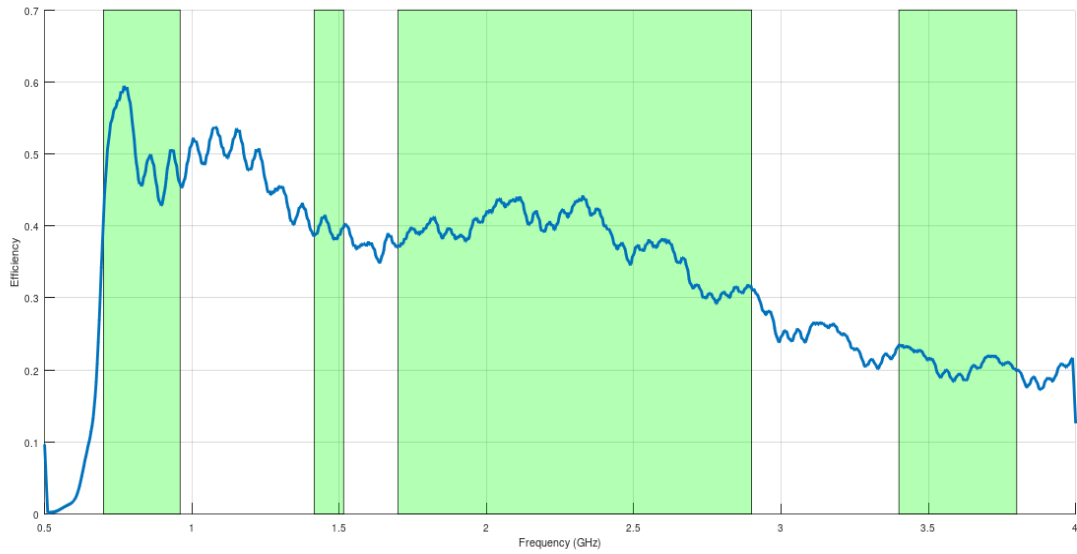


3.2- VSWR



*Data are given for 2m LMR100 cable.

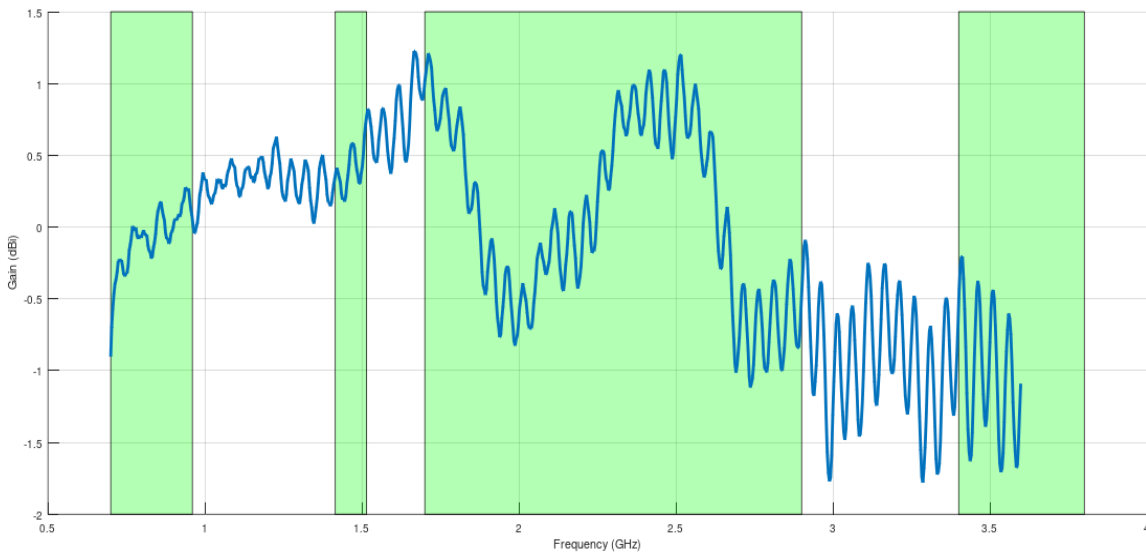
3.2- Efficiency



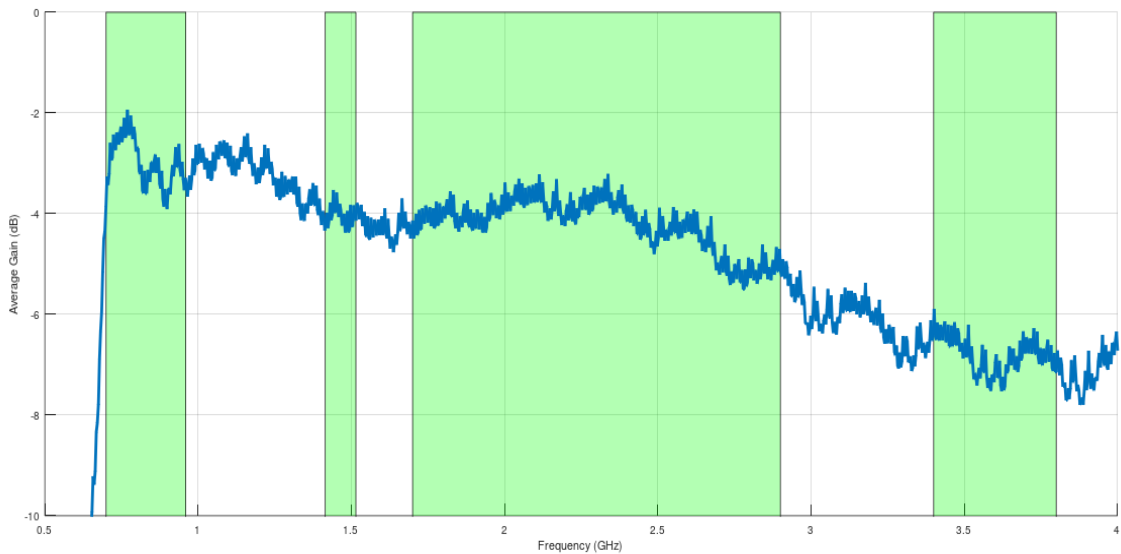
*Data are given for 2m LMR100 cable.

4- Radiator Patterns

4.1- Peak Gain

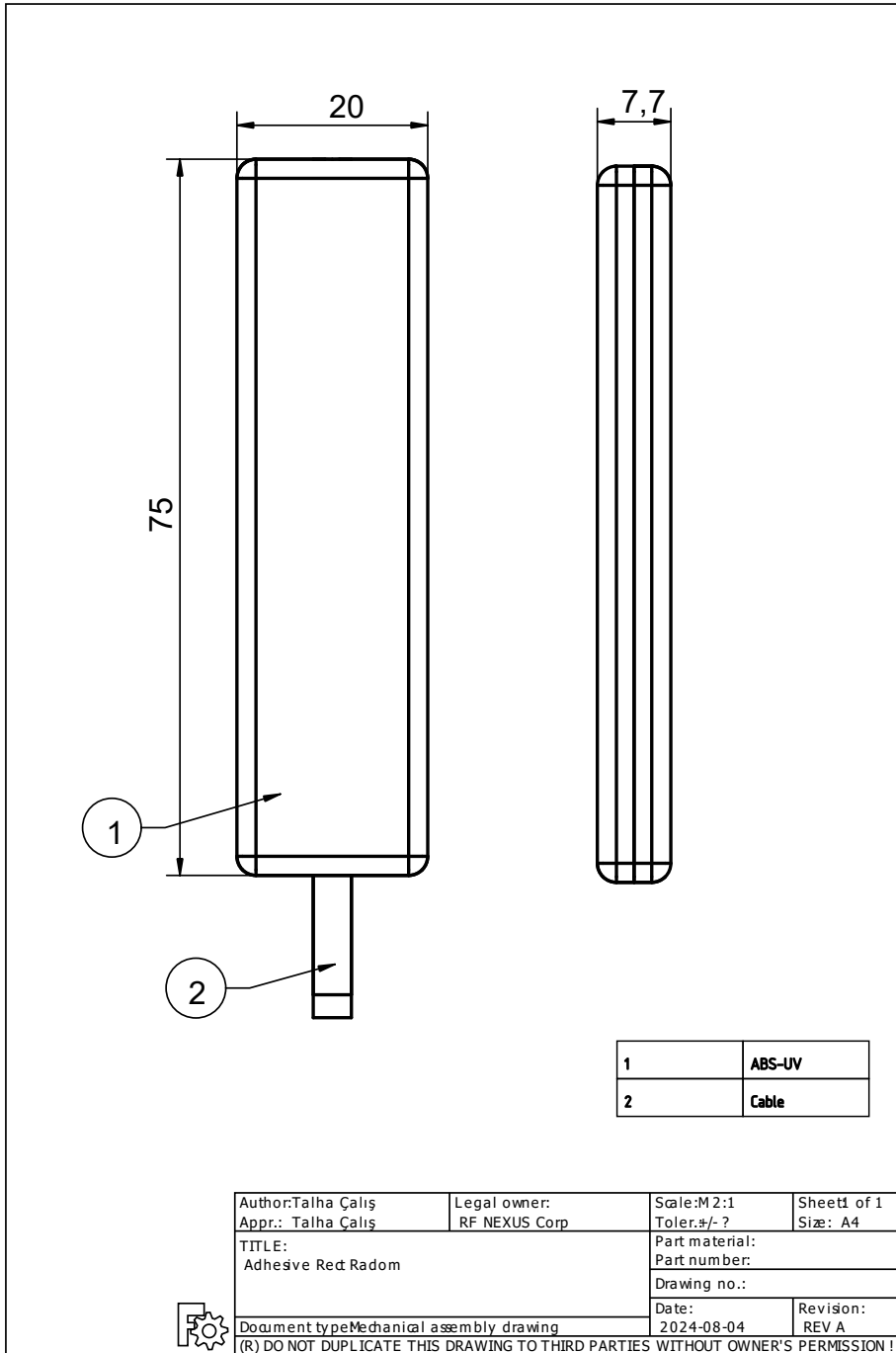


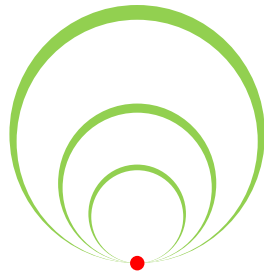
4.2- Average Gain



*Data are given for 2m LMR100 cable.

5- Technical Drawing





**RF
NEXUS**



+90 530-716-6670



www.nexus-rf.com



info@nexus-rf.com



**İvedikOSB Mh. 2224. Cad.
No:1 - 117/A
Yenimahalle / Ankara**